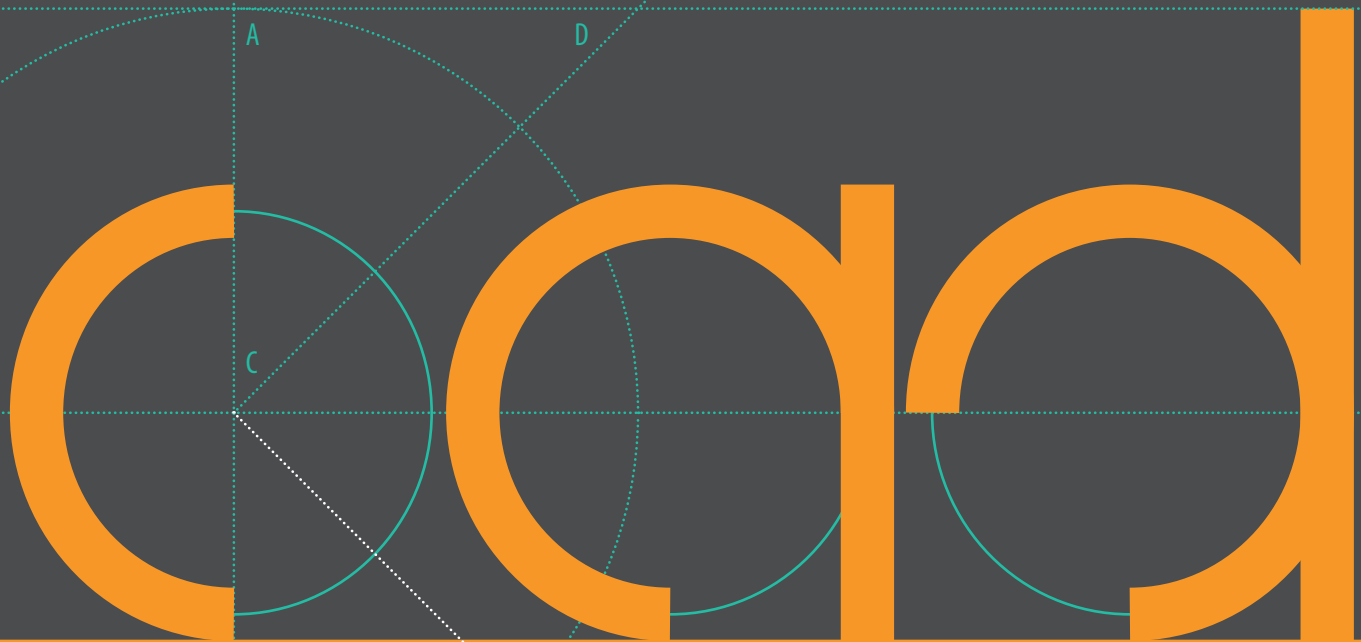


TIMKEN



CAD.TIMKEN.COM
QUICK START GUIDE

Stronger. Value. | Stronger. By Design.

CONNECT

CONNECT. Whether you are designing optimal Timken bearings or related products into new industrial equipment or simply need interchange options, you'll find extensive, helpful information on the Timken website, timken.com. Of course, you may contact your Timken sales engineer or customer service representative for additional information.

ACCESS

ACCESS. With cad.timken.com, you have easy access to thousands of 3D CAD models and 2D drawings of Timken bearings and related products.

- Spherical Roller Bearings
- Cylindrical Roller Bearings
- Tapered Roller Bearings
- Thrust Roller Bearings
- Housed Unit Bearings
- Ball Bearings
- Couplings
- Chain

DOWNLOAD

DOWNLOAD. Once you have selected a CAD file, download and insert it into your solution. Timken collaborates with ThomasNet® to provide support for major CAD formats, promoting seamless integration into your engineering design system.

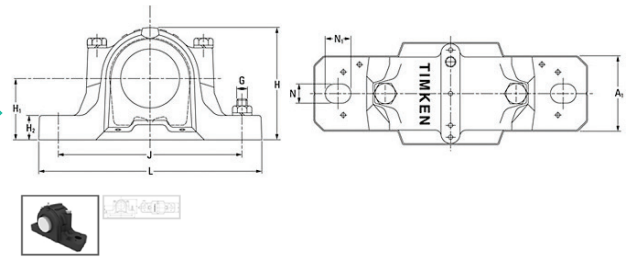
- AutoCAD®
- Autodesk®
- Autodesk Inventor®
- Autodesk Revit®
- CADopia™
- Catia®
- Creo®
- Intergraph®
- Navigator®
- Pro|Engineer Wildfire® 5.0
- PTC Creo®
- Remarc
- Siemens NX™
- Solid Edge®
- SolidWorks®
- Think3®
- TopSolid®
- TurboCAD® Deluxe 2D/3D
- ZW3D™

PRODUCT DETAILS ^{PC}

Click on a product number to view details that vary by product line.

Product Image: Click to view a larger image with greater detail.

Dimensional Call-outs: Click to view a larger image with dimensional nomenclature.



Housing - Bearing - Seal SNT 510-608 - 21308K - TSNG608, SNT Taper Bore

[Request Information](#)

[Download Page](#) [Download PDF](#) [Email This Page](#)

VIEW CAD DRAWING

3D

2D Front View

2D Top View

2D Sales Drawing

[Types of Components](#) | [Housings](#) | [Bearings](#) | [Dimensions](#)

Types of Components

Housing	SNT 510-608
Bearing	21308K
Locating Rings (width x OD)	SR90X9
Seal Type	Double Lip
Seal	TSNG608
Adapter Sleeve	H308
Locknut	KH8
Lockwasher	MB8
End Cover ¹	ECS10-608

Housing

Material	Cast Iron
Housing Mass	3.2 Kg
Bolt Qty	2

Bearing

Cage Type	EJ
C1 Dynamic Load Rating	113
C0 Static Load Rating	102
Max Oil Speed	7100
Max Grease Speed	5800

Dimensions

Shaft Diameter d	35 mm
A	90 mm
A1	60 mm
G	M12
H	113.00 mm

General Product Information

Load and Speed Ratings

Dimensional Information

REQUEST INFORMATION SCREEN ^{PC}

Attach files (up to 5 files for a total size limit of 10MB)

[Attach File](#)

Your Information

[Cancel](#) [Submit](#)

Required Fields *

Where to Buy	End authorized Timken Distributor
Name*	<input type="text"/>
Job Title*	<input type="text"/>
Company*	<input type="text"/>
Address Line 1	<input type="text"/>
Address Line 2	<input type="text"/>
City	<input type="text"/>
State	<input type="text"/>
Zip/Postal Code	<input type="text"/>
Country*	<input type="text"/>
Phone Number	<input type="text"/>
Fax Number	<input type="text"/>
Email*	<input type="text"/>
Send Copy to Sell	<input type="checkbox"/>
Remember my information	<input type="checkbox"/>
Comments	<input type="text"/>

Enter the code shown to the right.
(Note: If you cannot read the code, click refresh to get a new image)

751

[Privacy & Terms](#)

[Cancel](#) [Submit](#)

For technical assistance click on the "Request Information" button, fill out the appropriate information and click the Submit button.

3 OUTPUT & DOWNLOAD

FOUR DRAWING TYPES AVAILABLE

3D View: Use the tools to see different views.

2D Front View: Line drawing.

2D Top View: Line drawing.


2D Sales Drawing: PDF with multiple views and technical information.

TIMKEN For Problems Accessing a CAD Model Please Contact 1-800-451-4231 | CustomerService@ThomasNet.com [Timken Privacy Statement](#)

DXF File (*.dxf) Allibre Design >= 8.2

Download Email Click to Enable Insert

Insert View Static Viewer

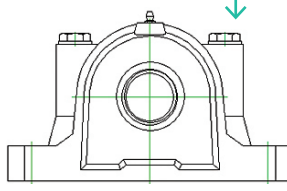
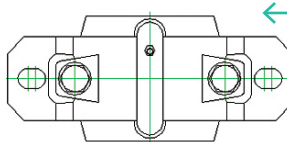
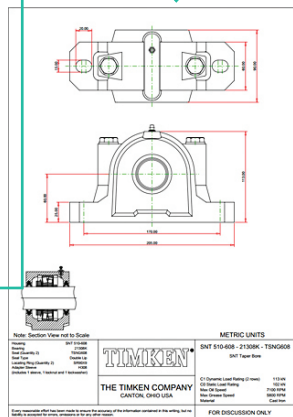


Drawing Units: ☒ inch ☐ mm

3D 2D Front View 2D Top View 2D Sales Drawing

Bill of Material

Item #	Description	Supplier
SNT 505 - 22205K - TSNG505	SNT Taper Bore	The Timken Company

METRIC UNITS

SNT 505 - 22205K - TSNG505

THE TIMKEN COMPANY

CAUTION: CAUTION: CAUTION

FOR DISCUSSION ONLY

DOWNLOAD PC

Once the part is found, click the CAD link.

Select your CAD system (some formats only available as Insert).

Click the Download, Email or Insert button.

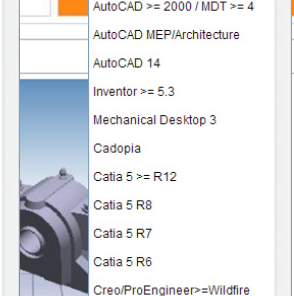
Enter required information.

TIMKEN For Problems Accessing a CAD Model Please Contact 1-800-451-4231 | CustomerService@ThomasNet.com [Timken Privacy Statement](#)

DXF File (*.dxf) Allibre Design >= 8.2

Download Email Click to Enable Insert

Insert View Static Viewer



Drawing Units: ☒ inch ☐ mm

3D 2D Front View 2D Top View 2D Sales Drawing

Bill of Material

Item #	Description	Supplier
SNT 505 - 22205K - TSNG505	SNT Taper Bore	The Timken Company

CAD User Information

Required Fields *

Email *

First Name *

Last Name *

Company *

Country * UNITED STATES OF A *

Zip/Postal Code *

Phone Number

Send

Alibre Design >= 8.2

AutoCAD >= 2000 / MDT >= 4

AutoCAD MEP/Architecture

AutoCAD 14

Inventor >= 5.3

Mechanical Desktop 3

Cadopia

Catia 5 >= R12

Catia 5 R8

Catia 5 R7

Catia 5 R6

Creo/ProEngineer >= Wildfire

Pro/ENGINEER 2001

Pro/ENGINEER 2000 i2

Remarc

NX >= 7.5 IGES

NX >= 7.5 STEP

Solid Edge >= 15

Solid Edge 14

Solid Edge 12

Solid Edge 11

Solid Edge 10

Solid Edge 9

Solid Edge 8

Solid Works >= 2000

Solid Works 99

Think3 Designer 8.4

TopSolid 6.4

TurboCAD Pro >= 10

TurboCAD 9 Professional

TurboCAD 8 Professional

ZW3D > 2010

VX CAD >= 13.6

→ OPTION: FILTER PRODUCT DETAILS

FILTER FOR PRODUCT DETAILS ^{PC}

On the home page click on a category.

Select a product type.

Use CTRL or Shift to select a range of product preferences.

Click Filter.

Selected fields with CTRL or Shift are highlighted.

The products that meet your filter criteria are displayed.

Request Information
All Product Types

Housed Unit Bearings
Timken offers one of the broadest ranges of rugged housed units for spherical, tapered and ball bearings. For spherical bearings, select from solid-block steel housings and split-block (SMT&F) cast-iron housings. To protect bearings in dirty and contaminated environments, Timken offers a variety of sealing and end cover options.

Spherical Roller Bearings
Spherical bearings are designed to manage high radial loads even when misalignment, poor lubrication, contamination, extreme speeds or critical application stresses are present.

Spherical bearings are designed to manage high radial loads even when misalignment, poor lubrication, contamination, extreme speeds or critical application stresses are present.

Spherical Roller Bearings - Steel Cage (1007)

Spherical Roller Bearings - Brass Cage (2490)

Spherical Roller Bearings - Application Specific Groups

Spherical Roller Bearing Metric and Inch Accessories

This category has 1,967 items. Only the first 1000 records are returned.

Spherical bearings are designed to manage high radial loads even when misalignment, poor lubrication, contamination, extreme speeds or critical application stresses are present.

1 - 25 of 1000 | Results Per Page: 25 | View: [Grid/Compare] | Unit of Measure: Both | 1 2 3 4 5

Request Information **Compare Items** **Search by Specification**

Clear **Filter**

d - Bore (mm)

No Preference
25
30
35
40

d - Bore (in)

No Preference
0.9843
1.1811
1.378
1.5748

D - Outer Diameter (mm)

No Preference
52
62
72
80

Timken Part Number	d - Bore	D - Outer Diameter	B - Outer Ring Width	Bore Taper	CL(2) - Static Radial Rating (7000-lbf)	CL(2) - Dynamic Radial Rating (7000-lbf)	Reference Thermal Speed Rating (Grease)	Reference Thermal Speed Rating (Oil)	Cage Type	Cage Material
22205E263	25 mm 0.9843 in	52 mm 2.0472 in	18 mm 0.7087 in	N/A	43100 N 9690 lbf	50600 N 11400 lbf	9200000	11500000	E3	STEEL
22205E263C2	25 mm 0.9843 in	52 mm 2.0472 in	18 mm 0.7087 in	N/A	43100 N 9690 lbf	50600 N 11400 lbf	9200000	11500000	E3	STEEL
22205E263C3	25 mm 0.9843 in	52 mm 2.0472 in	18 mm 0.7087 in	N/A	43100 N 9690 lbf	50600 N 11400 lbf	9200000	11500000	E3	STEEL
22205E263C3A	25 mm 0.9843 in	52 mm 2.0472 in	18 mm 0.7087 in	N/A	43100 N 9690 lbf	50600 N 11400 lbf	9200000	11500000	E3	STEEL
22205E263C4	25 mm 0.9843 in	52 mm 2.0472 in	18 mm 0.7087 in	N/A	43100 N 9690 lbf	50600 N 11400 lbf	9200000	11500000	E3	STEEL

1 - 25 of 1000 | Results

Request Information **Compare Items**

Clear **Filter**

d - Bore (mm)

No Preference
25
30
35
40

d - Bore (in)

No Preference
0.9843
1.1811
1.378
1.5748

D - Outer Diameter (mm)

No Preference
52
62
72
80

1 - 15 of 15 | Results

Request Information **Compare Items**

Clear **Filter**

d - Bore (mm)

No Preference
25
30
35
40

d - Bore (in)

No Preference
0.9843
1.1811
1.378
1.5748

D - Outer Diameter (mm)

No Preference
52
62
72
80









SEARCH BY KEYWORD ^{MOBILE}

Touch the icon to begin a search by keyword or part number.

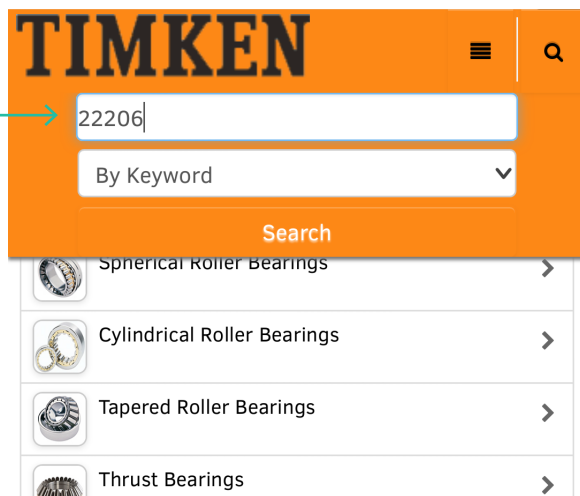
Enter your search term and touch your search icon on the onscreen keyboard (not shown).



All Product Types

-  Housed Unit Bearings >
-  Spherical Roller Bearings >
-  Cylindrical Roller Bearings >
-  Tapered Roller Bearings >
-  Thrust Bearings >
-  Ball Bearings >
-  Couplings >
-  Timken Drives - Chain Configurator >

Full Site View | Home | About | Contact
© 2015 The Timken Company.



To refine your search touch the filter results button.



← All Product Types

"22206" in All Product Types

26 Items and 4 categories

Filter Results



SNT Cylindrical Bore
(4 matching Items)

View all Items

ADVANCED SEARCH OPTIONS ^{MOBILE}

Select your product category and touch the Search by Specification button.

Enter your range of measurements or select options (varies by product).

Scroll to the bottom and touch the search button.

← Spherical Roller Bearings

Spherical Roller Bearings - Steel Cage

Search by Specification

← Spherical Roller Bearings - Steel Cage

Advanced Search in Spherical Roller Bearings - Steel Cage

UOM

Dimensions

d - Bore (mm)

At Least : 30

No More Than :

40

Available Range: 25 to 400

Clear

Cancel

Search


PRODUCT DETAILS MOBILE

Navigate to a product category.

Touch the Part Number.








Touch the Specifications Tab.


Use the mail icon to email the results.


Spherical Roller Bearings - Brass Cage

Items

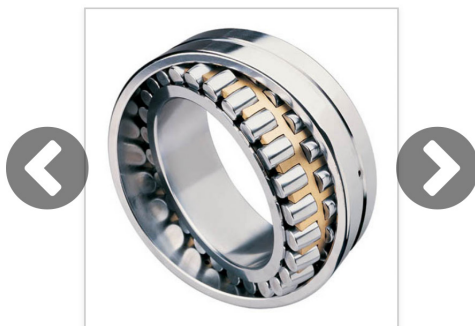
Description

Timken Part Number	d - Bore	CAD
22206EM	30 mm 1.1811 in	

← Spherical Roller Bearings - Brass Cage

22206EM



 Request Information



Description CAD Specifications

ADDITIONAL PRODUCT DETAILS MOBILE

Use the down arrow icon to view additional specifications and downloads such as links to Toolkits for Engineers on Timken.com.

 Request Information



Description CAD Specifications

22206EM

Spherical bearings
radial loads even w
lubrication, contain
critical application

[Dimensions](#)
[Abutment and Fillet Dimensions](#)
[Basic Load Ratings](#)
[Factors](#)
[Downloads](#)

Description CAD Basic Load Ratings

C0 - Static Radial Rating	56800 N12800 lbf
C1(2) - Dynamic Radial Rating (Two-Rows)	64300 N14400 lbf

Description CAD Downloads

[Bearing Life Calculation Tool \(ASPX, OKB\)](#)

[Bearing Dimensional Tolerances \(ASPX, OKB\)](#)

[Tools and Guides for Engineers \(ASPX, OKB\)](#)

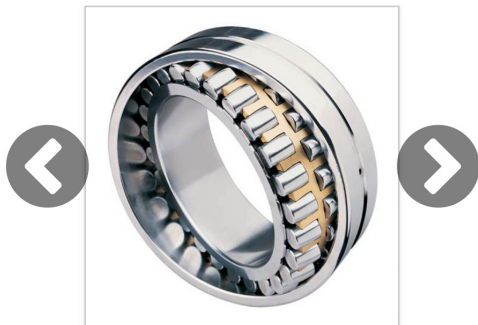
REQUEST INFORMATION MOBILE

Users can request information for a part number using the request information button.

Enter the required fields, complete the security exercise and then click on the submit button.

← Spherical Roller Bearings - Brass Cage

22206EM



 Request Information



← 22206EM

Request Information

1 Timken Part Number 22206EM, Spherical Roller Bearings - Brass Cage

Required Fields *

Where to Buy

Find authorized Timken Distributor

Name *

Name

Job Title *

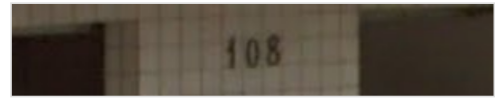
Job Title

Company *

Company

Enter the code shown to the right

(Note: if you cannot read the code, click refresh to get a new image)



Type the text

[Privacy & Terms](#)

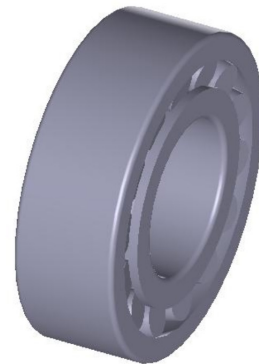
Cancel

Submit

DOWNLOAD MOBILE

You can download files directly to your device, a wide variety of CAD files are available.

You can also email files.



Drawing Units: ☒ inch ☐ mm

Bill Of Material

CAD Views

Download/Email

DXF File (*.dxf)



Download

Email

CHAIN CONFIGURATOR

CHAIN CONFIGURATOR PC, MOBILE

Timken Drives chain can be configured on CAD.
Timken.com using either a PC or mobile device.

Navigate to the tool from the main page.



Timken Drives - Chain Configurator

1. Build your own Chain
 - a. Chains cut to your specific length
 - b. Attachment Chain
2. Visually see your chain assembly
3. Ensure proper communication of your requirements
4. Submit your request for quote with just a click of your mouse
5. Generate drawings 2D or 3D CAD module which can be down loaded for your own equipment drawing

Modify Configuration

Reset

Cancel

View Results

Chain Type

☐ Double Pitch Chain ☒ Single Pitch Chain

Chain Assembly

☒ Attachment Chains ☐ Cut Strands (without Attachments)

Chain Material

Carbon Steel

Chain Series

☐ Heavy Duty ☒ Standard

Chain No.

40CE (0.500" Pitch)

Type of Pin

Riveted

Length of First Section - No. of Links

2

Longer Chain Available

If more links are required please contact Timken Drives.

Multiple-Strands

1

Attachment

BA-1 (Double Pitch)

BA-1 (Single Pitch)

BA-2 (Double Pitch)

BA-1 (Single Pitch)

BA-2 (Single Pitch)

DK-1 (Double Pitch)

DK-1 (Single Pitch)

DK-2 (Double Pitch)

DK-2 (Single Pitch)

D-1 (Double Pitch)

D-1 (Single Pitch)

D-2 (Double Pitch)

D-2 (Single Pitch)

D-3 (Double Pitch)

D-3 (Single Pitch)

SA-1 (Double Pitch)

SA-1 (Single Pitch)

SA-2 (Double Pitch)

SA-2 (Single Pitch)

SK-1 (Double Pitch)

SK-1 (Single Pitch)

SK-2 (Double Pitch)

SK-2 (Single Pitch)

WBA-1 (Single Pitch)

WBA-1 (Single Pitch)

WBA-2 (Single Pitch)

WBA-2 (Single Pitch)

WBA-3 (Single Pitch)

WBA-3 (Single Pitch)

WSA-1 (Single Pitch)

WSA-1 (Single Pitch)

WSA-2 (Single Pitch)

WSA-2 (Single Pitch)

WSA-3 (Single Pitch)

WSA-3 (Single Pitch)

Offset Links

☒ No ☐ Yes

Repeating Sections

☒ No ☐ Yes

Total Length - Pitches

2

Total Length - Inches

1

Matching and Tagging

☒ Class 1 ☐ Class 2 ☐ Class 3 ☒ N/A

Lubrication

☒ Food Grade ☐ Heavy ☐ None ☐ Other ☐ Rust Preventive

Chain Image 1

Preview Image only, click View Results for full Chain details.

Reset

Cancel

View Results

Timken Part Number 80CR (1.000" Pitch), Timken Drives - Chain Configurator

Request Quote

Modify Configuration

Printable Page

Download PDF

Email This Page

VIEW CAD DRAWING

3D

2D Front View

2D Top View

The available options dynamically change as choices are made. Click the view results button when complete.

Drawings and models can be used in the same fashion as other products.

DOWNLOAD FREE TIMKEN CAD MODELS

You can easily view and download three dimensional (3D) computer-aided-design (CAD) models and two dimensional (2D) drawings for thousands of Timken® bearings and power transmission products in a wide choice of formats at no charge. For technical assistance when using cad.timken.com, just click on a "Request Information" button.

Providing convenient access to detailed technical information is a good example of how Timken works closely with customers in the industrial, automotive, aerospace, rail and other market sectors to improve the reliability and efficiency of machinery and equipment all around the world.

Visit cad.timken.com to download CAD files of trusted Timken bearings and related products for your next project.

TIMKEN

The Timken team applies their know-how to improve the reliability and performance of machinery in diverse markets worldwide. The company designs, makes and markets high-performance mechanical components, including bearings, gears, chain and related mechanical power transmission products and services.

Stronger. **Commitment.** Stronger. **Value.** Stronger. **Worldwide.** Stronger. **Together.** | Stronger. **By Design.**

Timken® is a registered trademark of The Timken Company. All other trademarks are the property of their respective owners. | © 2015 The Timken Company



cad.timken.com