



The Timken Company

4500 Mt Pleasant St. NW

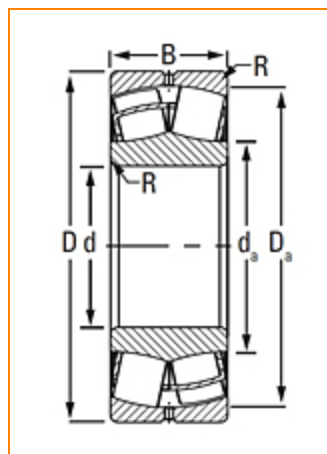
N. Canton, OH 44720

Phone: (234) 262-3000

E-Mail: CustomerCAD@timken.com • **Web site:** www.timken.com

Part Number 22324EJW33, Spherical Roller Bearings - Steel Cage

Spherical bearings are designed to manage high radial loads even when misalignment, poor lubrication, contamination, extreme speeds or critical application stresses are present.



[Specifications](#) | [Factors](#) | [Dimensions](#) | [Abutment and Fillet Dimensions](#) | [Basic Load Ratings](#)

Specifications

UPC Code	087796027251
Design Unit	Metric
d - Bore	120 mm
Lubrication Type	Standard Grease
Cage Type	EJ
Cage Material	Steel
Superseded Part	22324CJW33

Factors



e - ISO Factor¹

0.32

Y0 - ISO Factor²	2.07
Y1 - ISO Factor³	2.11
Y2 - ISO Factor⁴	3.15
Reference Thermal Speed Rating (Grease)	1900 rpm
Reference Thermal Speed Rating (Oil)⁵	2200 rpm
Cg - Geometry Factor⁶	0.0834

Dimensions

D - Outer Diameter	260 mm 10.2362 in
B' - Inner Ring Width	86 mm 3.3858 in
B - Outer Ring Width	86 mm 3.3858 in

Abutment and Fillet Dimensions

R - Inner Ring "To Clear" Radius⁷	2.5 mm 0.100 in
r - Outer Ring "To Clear" Radius⁸	2.5 mm 0.1 in
da - Inner Ring Backing Diameter	157.000 mm 6.2000 in
Da - Outer Ring Backing Diameter	234.000 mm 9.200 in

Basic Load Ratings

C0 - Static Radial Rating	1210000 N 272000 lbf
C1(2) - Dynamic Radial Rating (Two-Rows)	1080000 N 244000 lbf

¹ These factors apply for both inch and metric calculations. Consult your Timken representative for instruction on use.

² These factors apply for both inch and metric calculations. See engineering

³ These factors apply for both inch and metric calculations. Consult your Timken representative for instruction on use.

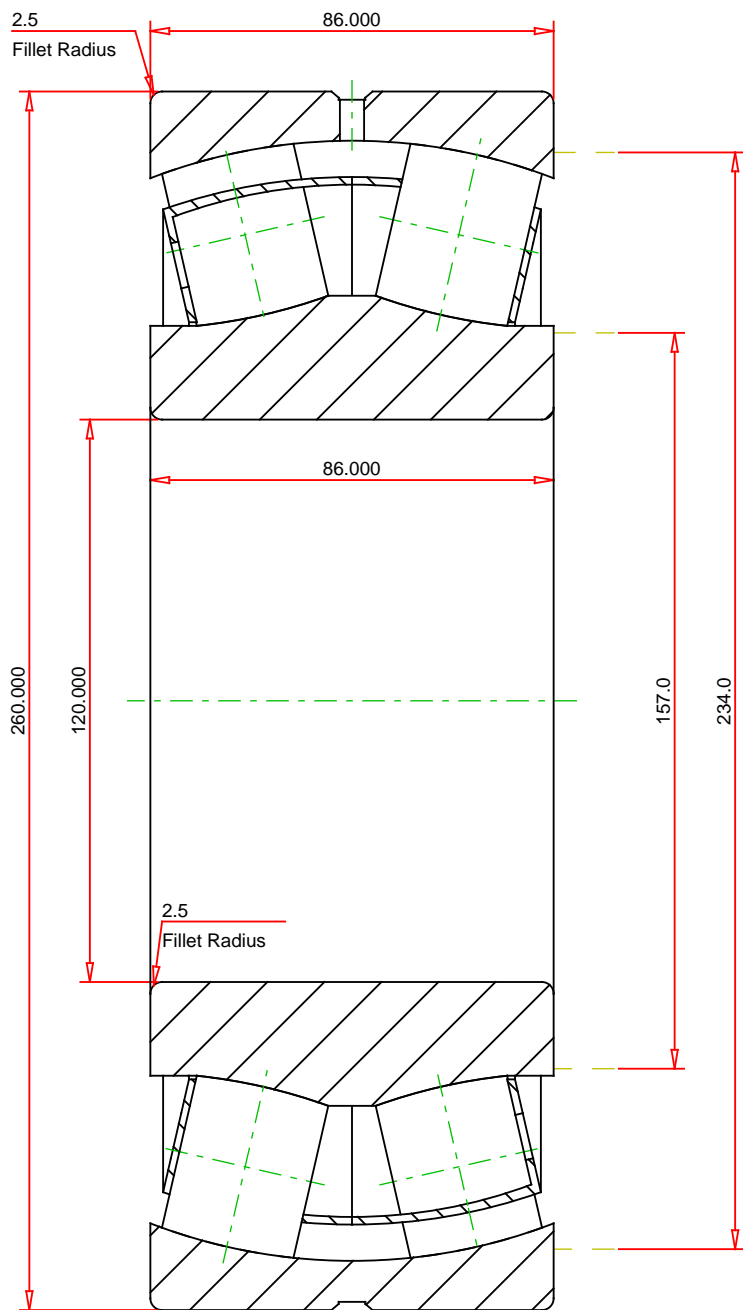
⁴ These factors apply for both inch and metric calculations. Consult your Timken representative for instruction on use.

⁵ See thermal speed ratings in the engineering section.

⁶ Geometry constant for Lubrication Life Adjustment Factor a_3 .

⁷ Maximum housing fillet radius that bearing corners will clear.

⁸ These maximum fillet radii will be cleared by the bearing corners.



METRIC UNITS

Number of Rollers Per Row	16		22324EJW33 SRB ASSEMBLY			
ISO Factor e	0.32					
ISO Factor Y0	2.07					
ISO Factor Y1	2.11					
ISO Factor Y2	3.15					
Bearing Weight	kg	THE TIMKEN COMPANY NORTH CANTON, OHIO USA	Dynamic Radial Rating (Two Rows)		1080000	N
Cage Type	EJ		Static Radial Rating		1210000	N
Cage Material	Steel					

Every reasonable effort has been made to ensure the accuracy of the information contained in this writing, but no liability is accepted for errors, omissions or for any other reason.

FOR DISCUSSION ONLY