



**The Timken Company**

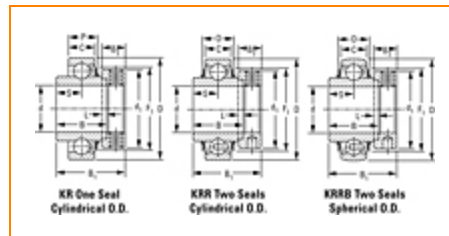
4500 Mt Pleasant St. NW

N. Canton, OH 44720

**Phone:** (234) 262-3000

**E-Mail:** [CustomerCAD@timken.com](mailto:CustomerCAD@timken.com) • **Web site:** [www.timken.com](http://www.timken.com)

## Part Number 1015KR, Fafnir® Eccentric Locking Collar Ball Bearings



[Specifications](#) | [Dimensions](#) | [Basic Load Ratings](#)

### Specifications

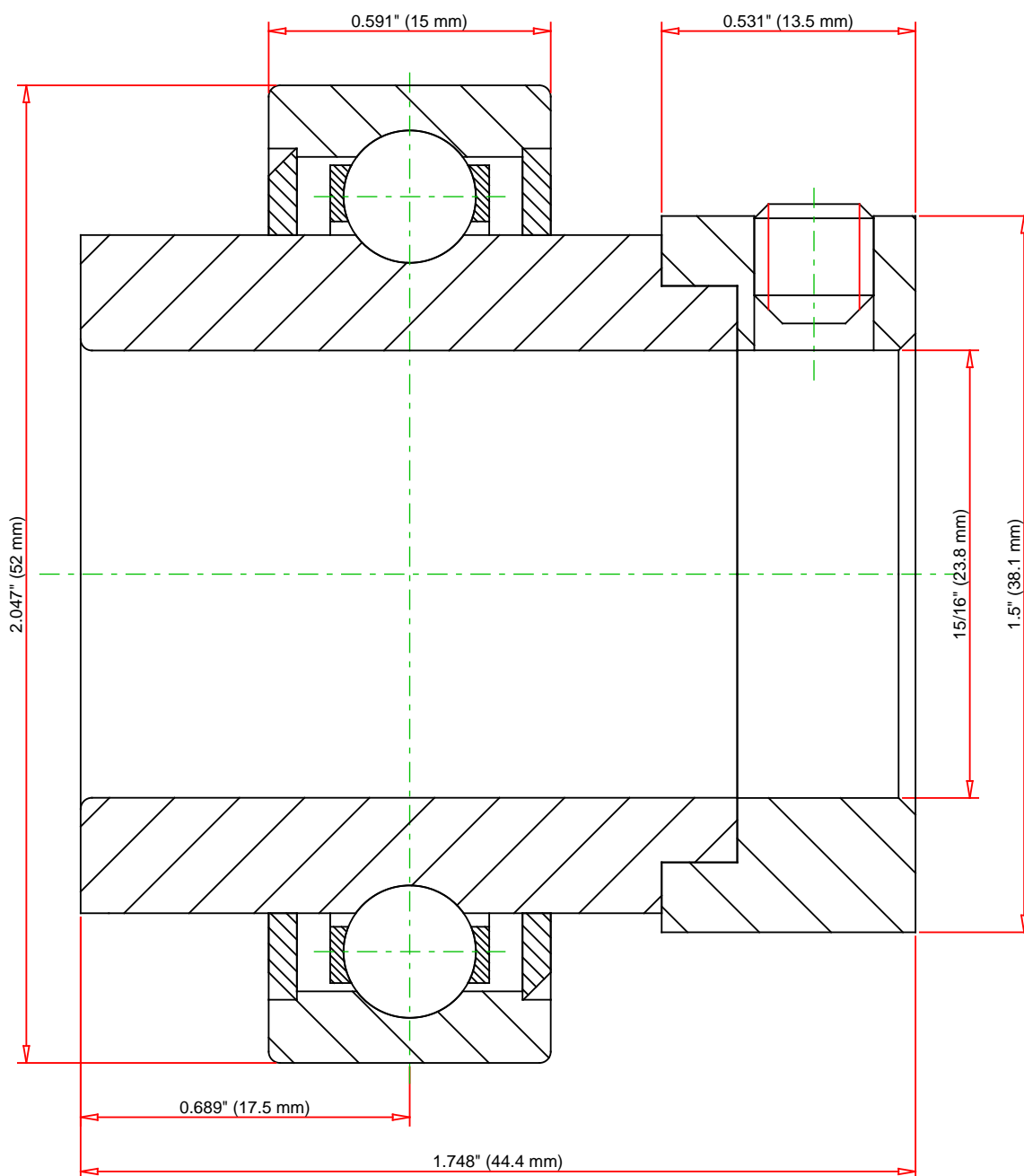
<b>Series</b>	Industrial
<b>Shaft Size d</b>	15/16 in
<b>Bore Type</b>	Cylindrical bore
<b>Bearing Type</b>	Ball Bearing
<b>Material</b>	Bearing Steel
<b>Lubrication Type</b>	Non-Relubricatable
<b>O.D. Type</b>	Cylindrical OD
<b>Sub Series</b>	1..KR
<b>Seal Type</b>	Shroud Seal

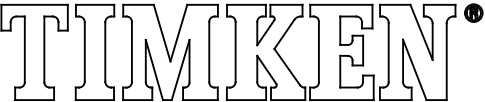
### Dimensions

<b>Outside Diameter D</b>	2.047 in 52 mm
<b>Inner Ring Width B</b>	1.375 in 34.92 mm
<b>Outside Ring Width C</b>	0.591 in 15 mm
<b>Radius r</b>	0.024 in 0.6 mm
<b>Center of Bearing from End S</b>	0.689 in 17.5 mm
<b>Set Screw Size</b>	1/4-20
<b>Number of Set Screws</b>	2
<b>Angle between Set Screws</b>	90 °
<b>Dimension d1</b>	1.5 in 38.1 mm
<b>Dimension B1</b>	1.748 in 44.4 mm
<b>Dimension B2</b>	0.531 in 13.5 mm

## Basic Load Ratings

<b>Static Load Rating</b>	1750 lbf 7800 N
<b>Dynamic Load Rating</b>	3490 lbf 15500 N



Weight	0.5 lb	0.2 kg		<div>1015KR</div> <div>Fafnir® Eccentric Locking Collar Ball Bearings</div>		
			<div>THE TIMKEN COMPANY</div> <div>NORTH CANTON, OHIO USA</div>		<div>Static Load Rating</div> <div>1750 lbf</div> <div>7800 N</div>	
				<div>Dynamic Load Rating</div> <div>3490 lbf</div> <div>15500 N</div>		
			<div>Every reasonable effort has been made to ensure the accuracy of the information contained in this writing, but no liability is accepted for errors, omissions or for any other reason.</div>		<div>FOR DISCUSSION ONLY</div>	