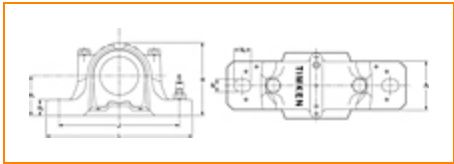





The Timken Company
4500 Mt Pleasant St. NW
N. Canton, OH 44720
Phone: (234) 262-3000
E-Mail: CustomerCAD@timken.com • **Web site:** www.timken.com

Housing – Bearing – Seal SNT 213 - 22213 - LO213, SNT/FSNT Cylindrical Bore Plummer
Block Mounted Bearings



[Types of Components](#) | [Housing](#) | [Bearing](#) | [Dimensions](#) | [Specifications](#)

Types of Components	
Housing	SNT 213
Bearing	22213
Locating Rings (width x OD)	SR120X10
Seal Type	Labyrinth
Seal	LO213
End Cover ¹	EC516-613

Housing	
Material	Cast Iron
 Bolt Qty	2

Housing Mass

6.6 Kg

Bearing

Cage Type

EJ

C1 Dynamic Load Rating

206000

C0 Static Load Rating

216000

Max Oil Speed

5100

Max Grease Speed

4200

Dimensions

Shaft Diameter da

65 mm

Shaft Diameter db

75 mm

A

110 mm

A1

80 mm

A2

128 mm

G

M16

H

149 mm

H1

80 mm

H2

30 mm

Jmax

238 mm

Jmin

222 mm

J

230 mm

L

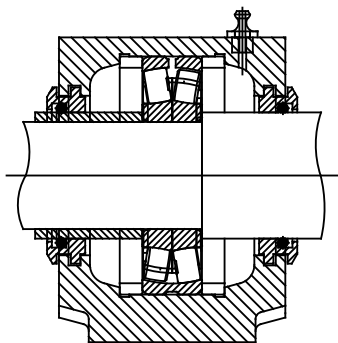
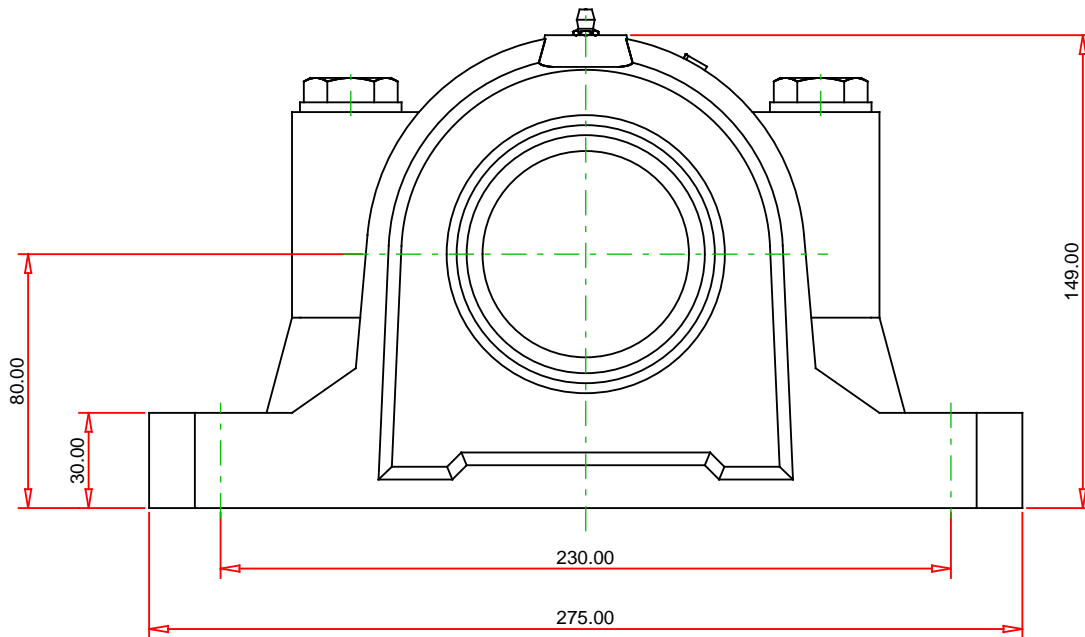
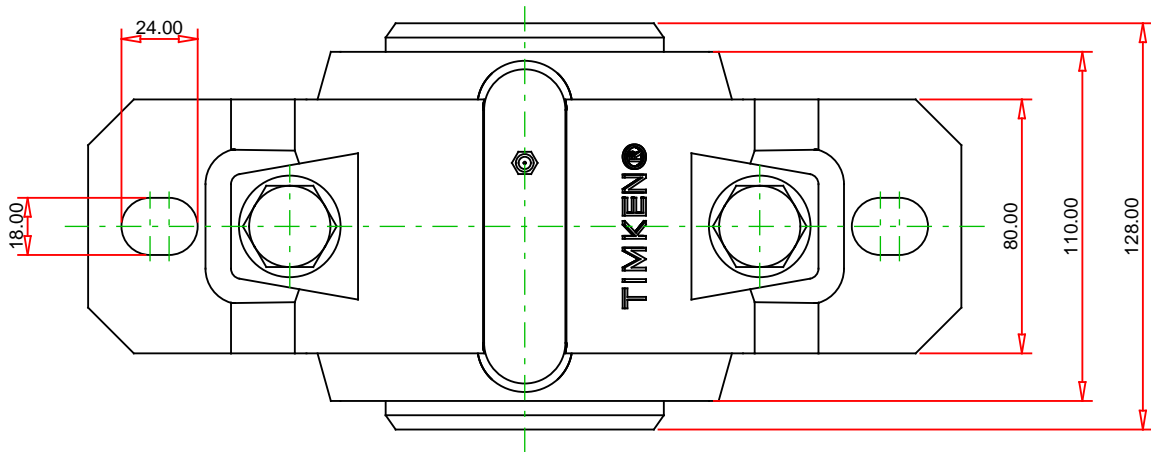
275 mm

N1	24 mm
N	18 mm

Specifications

UPC Code	999999999
Alternate Part Name	SNT213 - 22213 - LO213

¹ Two seals are required for a thru shaft application. One end cover can be used if application is not a thru shaft design. In this case, only one seal is required.



Note: Section View not to Scale

METRIC UNITS

Housing SNT 213
Bearing 22213
Seal (Quantity 2) LO213
Seal Type Labyrinth
Locating Ring (Quantity 2) SR120X10

TIMKEN®

THE TIMKEN COMPANY
NORTH CANTON, OHIO USA

SNT 213 - 22213 - LO213
SNT/FSNT Cylindrical Bore Plummer Block Mounted Bearings

C1 Dynamic Load Rating (2 rows)	206000 N
C0 Static Load Rating	216000 N
Max Oil Speed	5100 RPM
Max Grease Speed	4200 RPM
Material	Cast Iron

Every reasonable effort has been made to ensure the accuracy of the information contained in this writing, but no liability is accepted for errors, omissions or for any other reason.

FOR DISCUSSION ONLY