



The Timken Company

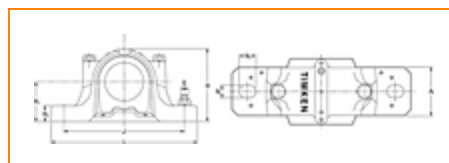
4500 Mt Pleasant St. NW

N. Canton, OH 44720

Phone: (234) 262-3000

E-Mail: CustomerCAD@timken.com • **Web site:** www.timken.com

Housing – Bearing – Seal SNT 518-615 - 23218K - TSNG518, SNT/FSNT Taper Bore Plummer Block Mounted Bearings



TIMKEN®
REPRESENTATIVE IMAGE

[Types of Components](#) | [Housing](#) | [Bearing](#) | [Dimensions](#) | [Specifications](#)

Types of Components

Housing	SNT 518-615
Bearing	23218K
Locating Rings (width x OD)	SR160X6.25
Seal Type	Double Lip
Seal	TSNG518
Adapter Sleeve¹	H2318
Locknut	KM18
Lockwasher	MB18
End Cover²	EC518-615



Housing

Material	Cast Iron
Housing Mass	13.1 Kg
Bolt Qty	2

Bearing

Cage Type	EJ
C1 Dynamic Load Rating	436000
C0 Static Load Rating	521000
Max Oil Speed	3000
Max Grease Speed	2600

Dimensions

Shaft Diameter d	80 mm
A	140 mm
A1	100 mm
G	M20
H	194 mm
H1	100 mm
H2	35 mm
J	290 mm
Jmax	295 mm
Jmin	285 mm

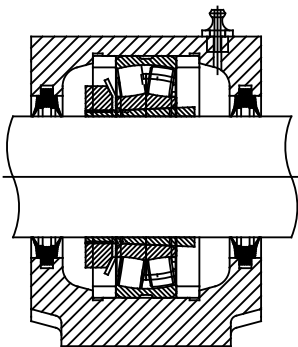
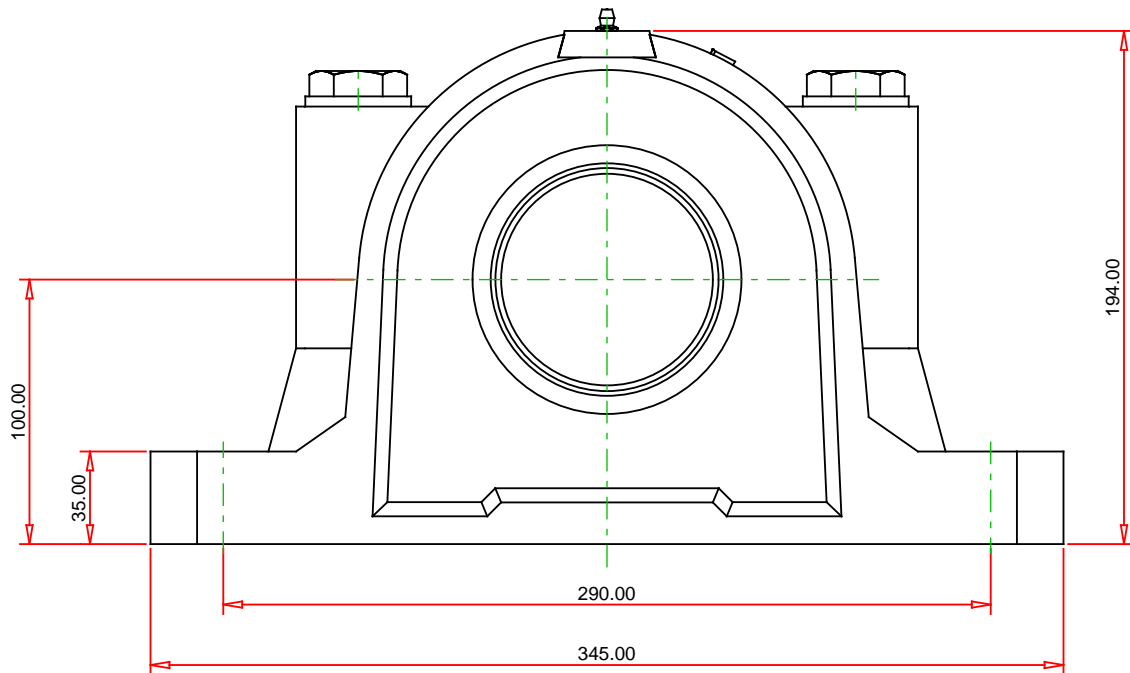
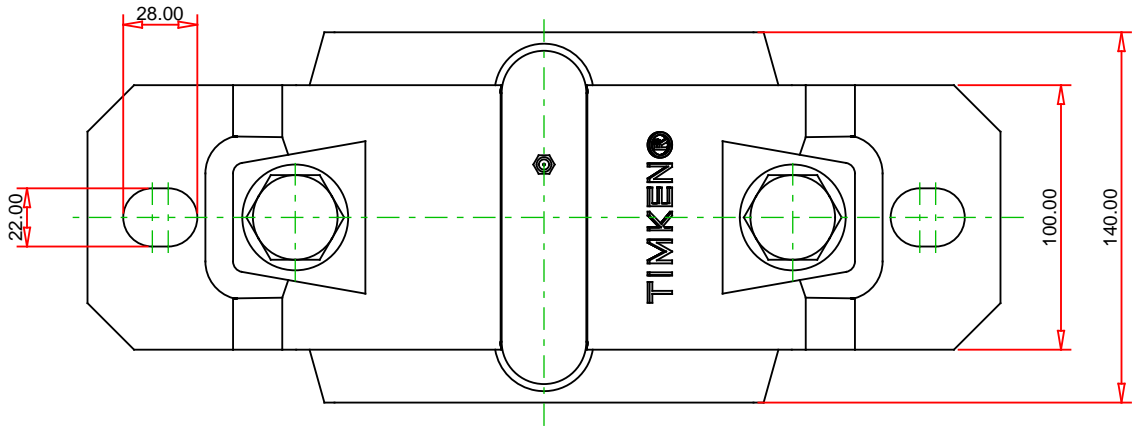
L	345 mm
N	22 mm
N1	28 mm

Specifications

UPC Code	999999999
Alternate Part Name	SNT518-615 - 23218K - TSNG518

¹ Purchase the Adapter Sleeve separately

² Two seals are required for a thru shaft application. One end cover can be used if application is not a thru shaft design. In this case, only one seal is required.



Note: Section View not to Scale

METRIC UNITS

Housing SNT 518-615
Bearing 23218K
Seal (Quantity 2) TSNG518
Seal Type Double Lip
Locating Ring (Quantity 2) SR160X6.25
Adapter Sleeve H2318
(includes 1 sleeve, 1 locknut
and 1 lockwasher)

TIMKEN®

THE TIMKEN COMPANY
NORTH CANTON, OHIO USA

SNT 518-615 - 23218K - TSNG518
SNT/FSNT Taper Bore Plummer Block Mounted
Bearings

C1 Dynamic Load Rating (2 rows)	436000 N
C0 Static Load Rating	521000 N
Max Oil Speed	3000 RPM
Max Grease Speed	2600 RPM
Material	Cast Iron

Every reasonable effort has been made to ensure the accuracy of the information contained in this writing, but no liability is accepted for errors, omissions or for any other reason.

FOR DISCUSSION ONLY