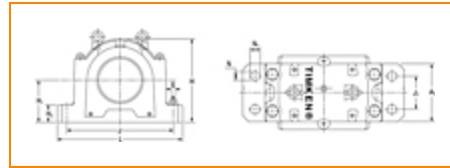




The Timken Company
4500 Mt Pleasant St. NW
N. Canton, OH 44720
Phone: (234) 262-3000

E-Mail: CustomerCAD@timken.com • Web site: www.timken.com

Housing – Bearing – Seal SNTD 3056 - 23056K - LO56, SNTD 3000 and 3100 Series Tapered Bore Plummer Block Mounted Bearings



[Types of Components](#) | [Housing](#) | [Bearing](#) | [Dimensions](#) | [Specifications](#)

Types of Components

Housing	SNTD 3056
Bearing	23056K
Locating Rings (width x OD)	SR420X10
Seal Type	Labyrinth
Seal	LO56
Adapter Sleeve ¹	OH3056H
Locknut	HM56T
Lockwasher	MB52
End Cover ²	EC56



Housing

Material	Ductile Iron
Housing Mass	254 Kg
Bolt Qty	4

Bearing

Cage Type	YMB
C1 Dynamic Load Rating	1660000
C0 Static Load Rating	2790000
Max Oil Speed	1100
Max Grease Speed	930

Dimensions

Shaft Diameter d	260 mm
A	320 mm
A1	280 mm
A2	330 mm
C	13 mm
G	M36
H	516 mm
H1	260 mm
H2	100 mm
J	650 mm

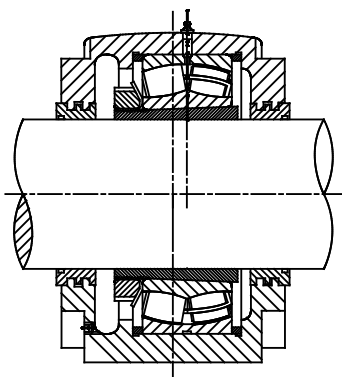
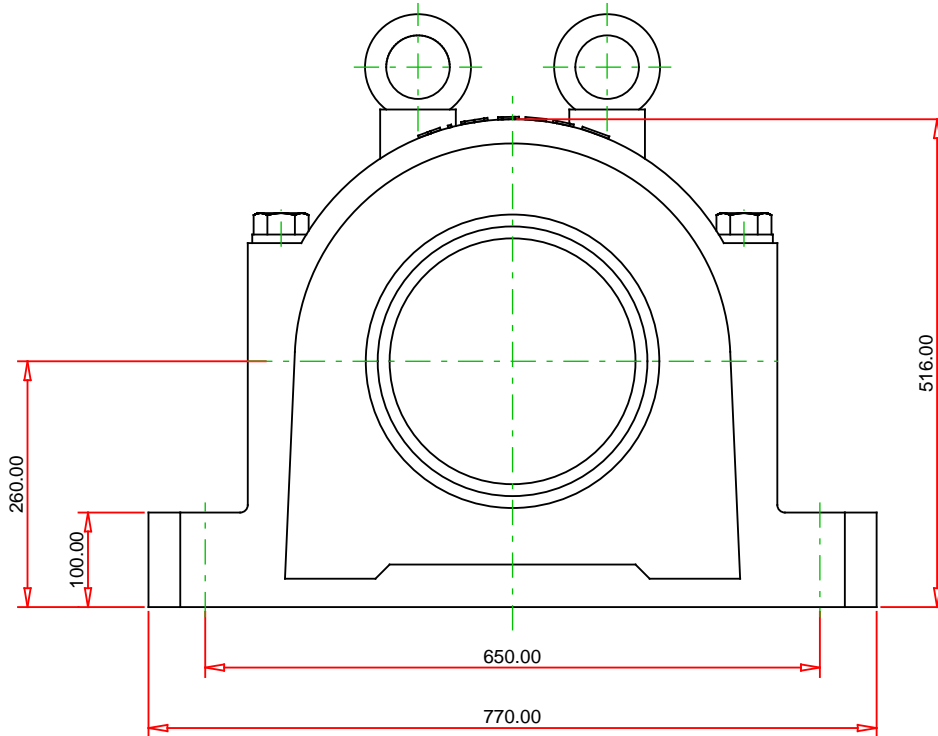
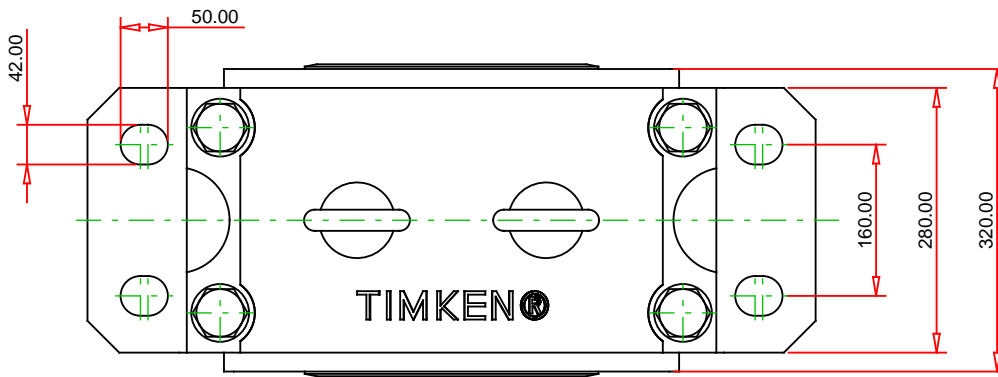
J1	160 mm
L	770 mm
N	42 mm
N1	50 mm

Specifications

Alternate Part Name	SNTD3056 - 23056K - LO56
Superseded Part	SNT 3056 - 23056K - LO56

¹ Purchase the Adapter Sleeve separately

² Two seals are required for a thru shaft application. One end cover can be used if application is not a thru shaft design. In this case, only one seal is required.



Note: Section View not to Scale

METRIC UNITS

Housing SNTD 3056
 Bearing 23056K
 Seal (Quantity 2) LO56
 Seal Type Labyrinth
 Locating Ring (Quantity 2) SR420X10
 Adapter Sleeve OH3056H
 (includes 1 sleeve, 1 locknut and 1 lockwasher)

TIMKEN

SNTD 3056 - 23056K - LO56
 SNTD 3000 and 3100 Series Tapered Bore Plummer
 Block Mounted Bearings

THE TIMKEN COMPANY
 NORTH CANTON, OHIO USA

C1 Dynamic Load Rating (2 rows)	1660000 N
C0 Static Load Rating	2790000 N
Max Oil Speed	1100 RPM
Max Grease Speed	930 RPM
Material	Ductile Iron

Every reasonable effort has been made to ensure the accuracy of the information contained in this writing, but no liability is accepted for errors, omissions or for any other reason.

FOR DISCUSSION ONLY