


**The Timken Company**

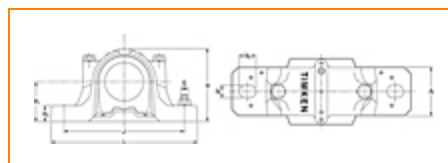
4500 Mt Pleasant St. NW

N. Canton, OH 44720

**Phone:** (234) 262-3000

**E-Mail:** [CustomerCAD@timken.com](mailto:CustomerCAD@timken.com) • **Web site:** [www.timken.com](http://www.timken.com)

## Housing – Bearing – Seal SNT 526 - 22226 - VR226, SNT/FSNT Cylindrical Bore Plummer Block Mounted Bearings



 TIMKEN®  
REPRESENTATIVE IMAGE

[Types of Components](#) | [Housing](#) | [Bearing](#) | [Dimensions](#) | [Specifications](#)

### Types of Components

<b>Housing</b>	SNT 526
<b>Bearing</b>	22226
<b>Locating Rings (width x OD)</b>	SR230X13
<b>Seal Type</b>	V-ring
<b>Seal</b>	VR226
<b>End Cover<sup>1</sup></b>	EC526

### Housing

<b>Material</b>	Cast Iron
 <b>Bolt Qty</b>	2

Housing Mass

34 Kg

## Bearing

Cage Type

EJ

C1 Dynamic Load Rating

757000

C0 Static Load Rating

945000

Max Oil Speed

2900

Max Grease Speed

2400

## Dimensions

Shaft Diameter da

130 mm

Shaft Diameter db

145 mm

A

190 mm

A1

130 mm

G

M24

H

290 mm

H1

150 mm

H2

50 mm

Jmax

387 mm

Jmin

373 mm

J

380 mm

L

445 mm

N1

35 mm

N

28 mm

Specifications

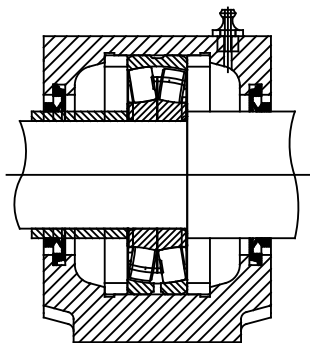
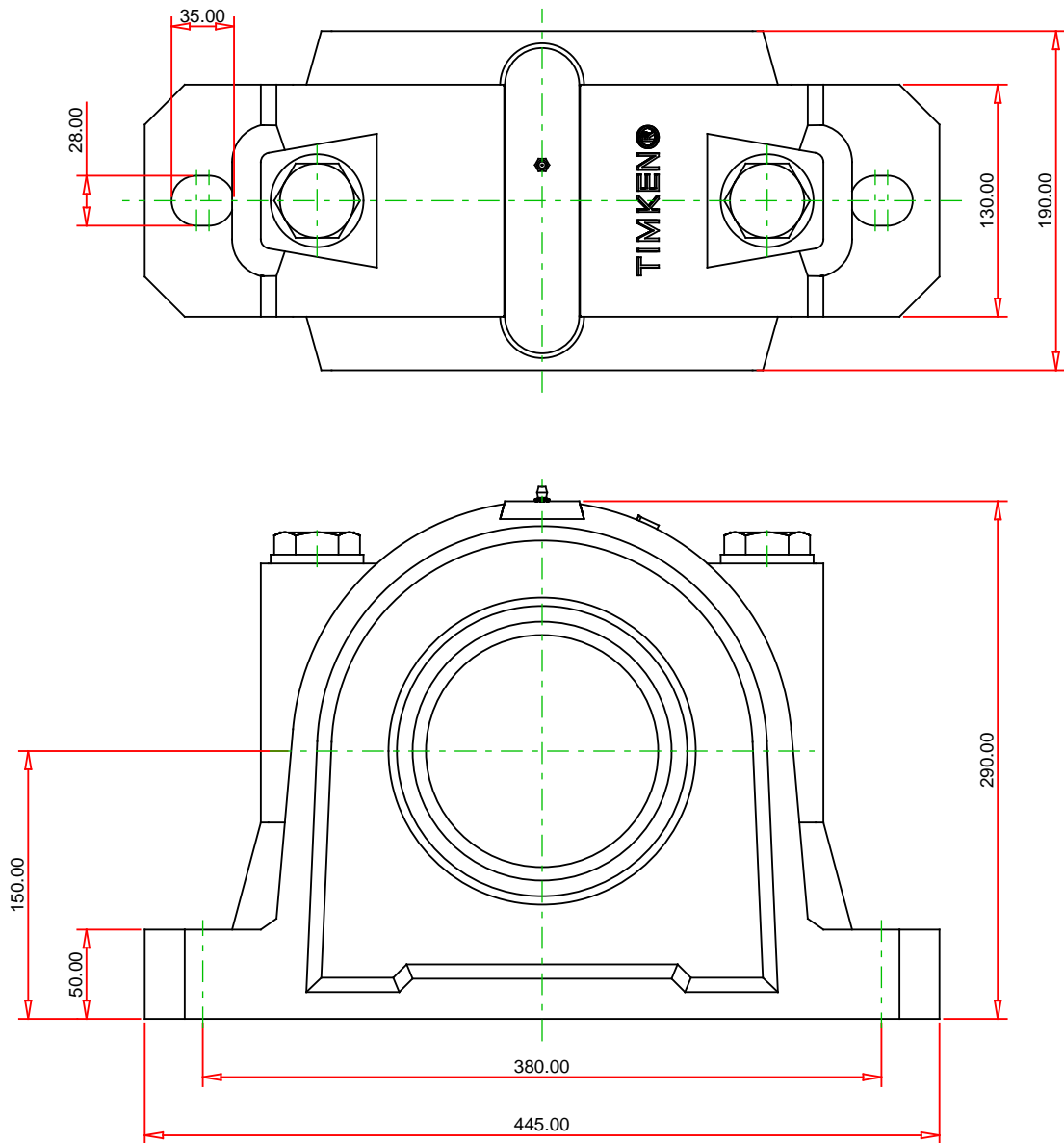
UPC Code

999999999

Alternate Part Name

SNT526 - 22226 - VR226

<sup>1</sup> Two seals are required for a thru shaft application. One end cover can be used if application is not a thru shaft design. In this case, only one seal is required.



Note: Section View not to Scale

METRIC UNITS

<div> <div>Housing</div> <div>SNT 526</div> </div> <div> <div>Bearing</div> <div>22226</div> </div> <div> <div>Seal (Quantity 2)</div> <div>VR226</div> </div> <div> <div>Seal Type</div> <div>V-ring</div> </div> <div> <div>Locating Ring (Quantity 2)</div> <div>SR230X13</div> </div>	<div> <div>TIMKEN®</div> <div>THE TIMKEN COMPANY</div> <div>NORTH CANTON, OHIO USA</div> </div>	<div> <div>SNT 526 - 22226 - VR226</div> <div>SNT/FSNT Cylindrical Bore Plummer Block Mounted Bearings</div> </div> <div> <div>C1 Dynamic Load Rating (2 rows)</div> <div>757000 N</div> </div> <div> <div>C0 Static Load Rating</div> <div>945000 N</div> </div> <div> <div>Max Oil Speed</div> <div>2900 RPM</div> </div> <div> <div>Max Grease Speed</div> <div>2400 RPM</div> </div> <div> <div>Material</div> <div>Cast Iron</div> </div>
---	---	--